

# HUNTERS®

HERE TO GET *you* THERE



## Oregon Close Kingswinford, DY6 8SJ

3 1 2 D  
Council Tax: C



# Oregon Close

Kingswinford, DY6 8SJ



## Front Of The Property

To the front of the property there is a driveway leading to the garage, front lawn and a path leading to the front door.

## Porch

With a double glazed composite door to front, double glazed door to rear, double glazed window to side and door to entrance hall.

## Entrance Hall

With a door from the porch and further door to rooms, useful storage cupboard and a central heating radiator.

## Kitchen Breakfast Room

11'1" x 9'10" (3.4 x 3)

With a door leading from the entrance hall this modern kitchen is fitted with a range of wall and base units, work surfaces with tiled splashback, one and a half sink and drainer, space for fridge freezer, plumbing for washing machine, gas hob with stainless steel cooker hood, electric oven, double glazed window to front, storage pantry and a central heating radiator.

## Lounge

18'0" x 13'5" (5.5 x 4.1)

With a door leading from the entrance hall, gas fire with decorative surround, double glazed sliding door to orangery, stairs to the first floor landing and a central heating radiator.

## Orangery

14'5" x 12'1" (4.4 x 3.7)

With a double glazed sliding door from the lounge, glass lantern roof, double glazed doors to rear garden, double glazed windows to rear and side, recessed spotlights and a central heating radiator.

## Landing

With stairs leading from the entrance hall, doors to rooms and loft access.

## Bedroom One

12'1" x 10'5" (3.7 x 3.2)

With a door leading from the landing, double glazed window to rear and a central heating radiator.

### Bedroom Two

12'1" x 8'6" (3.7 x 2.6)

With a door leading from the landing, double glazed window to front, storage cupboard and a central heating radiator.

### Bedroom Three

7'6" x 5'6" (2.3 x 1.7)

With a door leading from the landing, double glazed window to rear and a central heating radiator.

### Bathroom

With a door leading from the landing, bath with shower over, wash hand basin, double glazed window to front, tiled walls, wash hand basin, double glazed window to side and a central heating radiator.

### WC

With a door leading from the landing, WC, part tiled walls, wash hand basin and a central heating radiator.

### Garden

With double glazed doors from the orangery this private rear garden has a patio area with steps to lawn, there is a further patio to rear and a double glazed door to the porch.

### Garage

15'5" x 7'10" (4.7 x 2.4)

With an up and over door leading from the front of the property, power and lighting.



Road Map



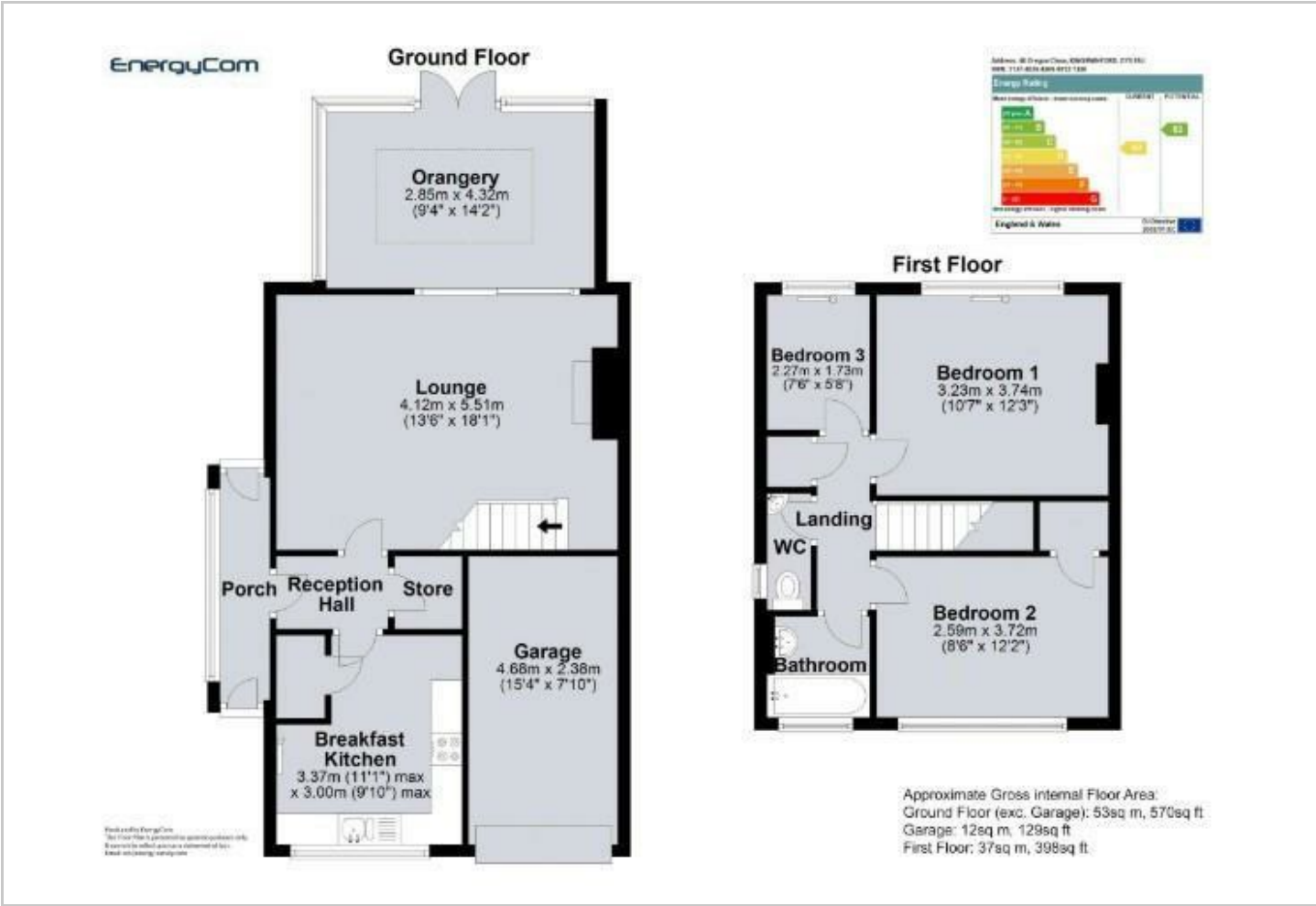
Hybrid Map



Terrain Map

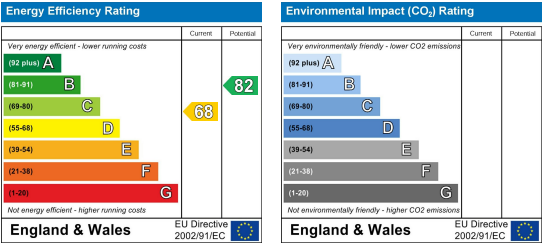


Floor Plan



Please contact our Hunters Stourbridge Office on 01384 443331 if you wish to arrange a viewing appointment for this property or require further information.

Energy Efficiency Graph



These particulars are intended to give a fair and reliable description of the property but no responsibility for any inaccuracy or error can be accepted and do not constitute an offer or contract. We have not tested any services or appliances (including central heating if fitted) referred to in these particulars and the purchasers are advised to satisfy themselves as to the working order and condition. If a property is unoccupied at any time there may be reconnection charges for any switched off/disconnected or drained services or appliances - All measurements are approximate. **THINKING OF SELLING?** If you are thinking of selling your home or just curious to discover the value of your property, Hunters would be pleased to provide free, no obligation sales and marketing advice. Even if your home is outside the area covered by our local offices we can arrange a Market Appraisal through our national network of Hunters estate agents.